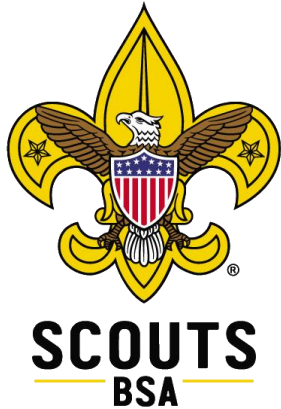


# PROGRAM LAUNCH 2023



VENTURING • BSA®



STEM  
SCOUTS®  
SCIENCE  
TECHNOLOGY  
ENGINEERING  
MATH



Thank you for attending tonight's event, we will be starting momentarily!

Tonight's event will be recorded for those that cannot attend.  
Staying on the call grants implied consent.



BOY SCOUTS OF AMERICA®  
HAWK MOUNTAIN COUNCIL



Prepared. For Life.®

# **SCOUT EXECUTIVE COMMENTS**

James Milham  
Scout Executive / CEO  
Hawk Mountain Council



**Prepared. For Life.®**

# **SAFETY MOMENT**

- Safety is paramount
- Consider having a Safety Moment at every meeting
- Tonight's moment: YPT



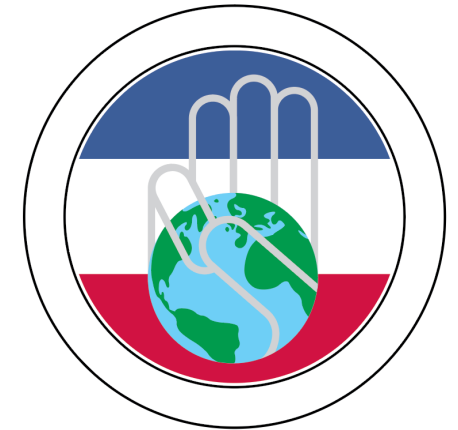
# **COUNCIL COMMISSIONER COMMENTS**

Daren Kullman  
Council Commissioner  
Hawk Mountain Council



**Prepared. For Life.®**

# DIVERSITY, EQUITY, AND INCLUSION MOMENT



[Citizenship in Society Parent Letter](#)



Prepared. For Life.®

# SPRING PRODUCT SALE

**WHITLEY'S**  
ESTD 1986  
— PEANUT FACTORY —

**Country  
Meats**  
.com



Prepared. For Life.®

# FALL PRODUCT SALE



**WHITLEY'S**  
ESTD 1986  
— PEANUT FACTORY —



A Scouting Tradition for over 35 years...

**PECATONICA RIVER POPCORN®**



**Prepared. For Life.®**

# ADVANCEMENT

- Who to contact in your District
- Overview of Special Needs Scouting Toolbox
  - <https://ablescouts.org/toolbox/>
- Overview of Advancement Resources
  - <https://www.scouting.org/programs/scouts-bsa/advancement-and-awards/resources/>
- Log advancements early and often!
- Life to Eagle Conferences (pre-recorded message – next slide)
- Life to Eagle meetings at summer camp



# ADVANCEMENT MESSAGE



Prepared. For Life.®

# HAWK MOUNTAIN SCOUT RESERVATION

## Weekend Usage

- Range rentals

## Special events

- Drive In Movies
- Trunk or Treat
- Holiday Haus

## Cub Scout Camp

- Day Camp at HMSR
- Cub Resident Camp at HMSR
- Webelos Resident Camp at HMSR
- Day Camp on the road!

## Scouts BSA Camp

- Dining Services
- Cowboy Action Shooting
- Annual Merit Badge Rotation



Prepared. For Life.®

# FALL CUB ADVENTURE DAY!



Prepared. For Life.®

# ORDER OF THE ARROW



## May Induction / Service Weekend

- May 19<sup>th</sup>, 20<sup>th</sup>, 21<sup>st</sup>

## Section E11 Conclave

- June 2<sup>nd</sup>, 3<sup>rd</sup>, 4<sup>th</sup>

## Brotherhood Day / Service Day

- November 18<sup>th</sup>

## Section E11 Conclave

- June 2<sup>nd</sup>, 3<sup>rd</sup>, 4<sup>th</sup>

## Lodge Leadership Development – December

## Lodge Banquet – December

## Campfire Circle improvement projects



Prepared. For Life.®

# 2023 NATIONAL JAMBOREE



Prepared. For Life.®

# **SOCIAL MEDIA**

- How and when to use it safely and effectively
- If pages are not private, no full name
- Talent release form



# MEMBERSHIP / RECRUITING

Theme for this year is “Adventure On!”

- See campaign kit – available on Program Launch resources page
- Current challenges and how you can help us overcome them
- Resources
  - National Brand Center – how to access and use, show key things
    - <https://scouting.webdamdb.com/bp/#/>
  - What can the Council offer?
    - Yard signs, bookmarks, peer cards, etc – with examples
    - Peer cards – fill out and send back to us, print on cardstock
    - Social Media ads, \$1 / day for 10 days



Prepared. For Life.®

# MEMBERSHIP / RECRUITING

## Local Successes

## Brand Center

Everything is fully usable for recruiting purposes

Key items:

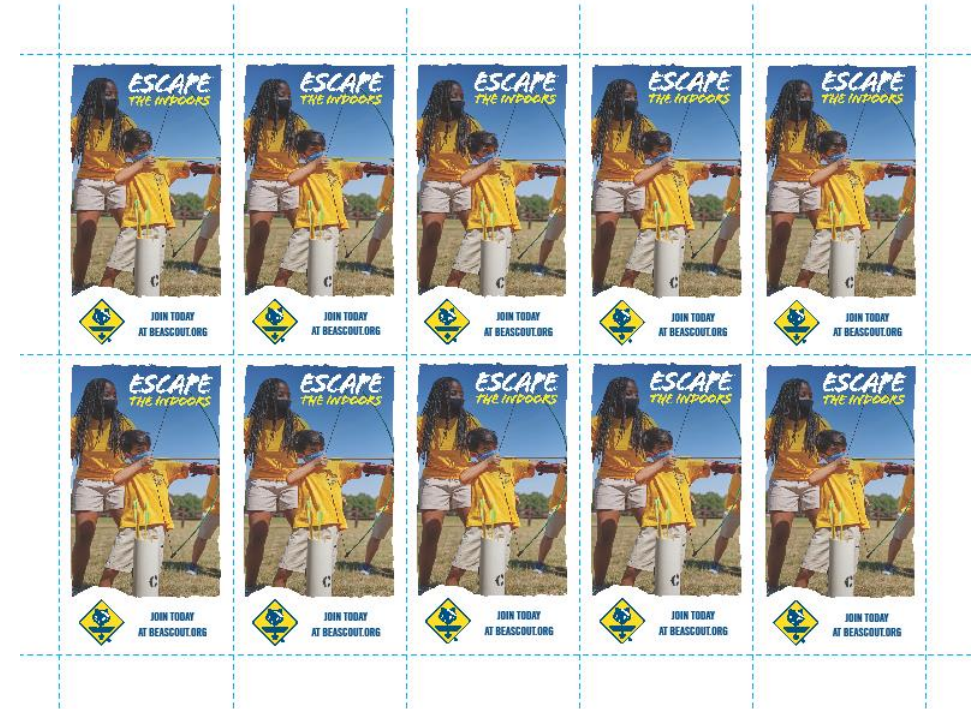
License free images (for Scouting purposes)!

Peer Cards

Flyers

Radio Spots / Videos

Everything else on it!



Prepared. For Life.®

# JOURNEY TO EXCELLENCE (JTE)

## • Pack Scorecard

## • Troop Scorecard

## • Crew Scorecard

## • Post Scorecard

**Pack \_\_\_\_\_ of \_\_\_\_\_ District**  
**2022 Scouting's Journey to Excellence**  
*"The BSA method for annual planning and continuous improvement"*

Item	Objective	Bronze Level	Silver Level	Gold Level	Bronze Points	Silver Points	Gold Points
<b>Planning and Budget</b>							
#1	<b>Planning:</b> Conduct an Annual Program Planning event to develop a plan, vision, and budget for the year ahead. The plan and budget should be reviewed by the pack committee and presented to all members at the next meeting.	Active Bronze: The pack conducts an annual program planning event to develop a plan, vision, and budget for the year ahead. The plan and budget should be reviewed by the pack committee and presented to all members at the next meeting.	Active Silver: The pack conducts an annual program planning event to develop a plan, vision, and budget for the year ahead. The plan and budget should be reviewed by the pack committee and presented to all members at the next meeting.	Active Gold: The pack conducts an annual program planning event to develop a plan, vision, and budget for the year ahead. The plan and budget should be reviewed by the pack committee and presented to all members at the next meeting.	50	100	200
<b>Membership</b>							
#2	<b>Building Cub Scouts:</b> Recruit new youth into the pack to ensure growth.	Active Bronze: The pack recruits at least one new youth into the pack to ensure growth.	Active Silver: The pack recruits at least one new youth into the pack to ensure growth.	Active Gold: The pack recruits at least one new youth into the pack to ensure growth.	50	100	200
#3	<b>Retention:</b> We retain a significant percentage of youth members.	Active Bronze: The pack retains at least 75% of youth members.	Active Silver: The pack retains at least 80% of youth members.	Active Gold: The pack retains at least 85% of youth members.	50	100	200
<b>Program</b>							
#4	<b>Advancement:</b> We achieve a high percentage of Cub Scouts earning rank advancements.	Active Bronze: The pack achieves a high percentage of Cub Scouts earning rank advancements.	Active Silver: The pack achieves a high percentage of Cub Scouts earning rank advancements.	Active Gold: The pack achieves a high percentage of Cub Scouts earning rank advancements.	100	200	300
#5	<b>Activities:</b> We conduct regular activities and outings.	Active Bronze: The pack conducts regular activities and outings.	Active Silver: The pack conducts regular activities and outings.	Active Gold: The pack conducts regular activities and outings.	50	100	200
#6	<b>Outdoor Activities:</b> Cub Scouts will attend day camp, long-term camp, and/or weekend camp (includes council-approved alternatives).	Active Bronze: The pack conducts regular activities and outings.	Active Silver: The pack conducts regular activities and outings.	Active Gold: The pack conducts regular activities and outings.	50	100	200
#7	<b>Service projects:</b> We participate in service projects (includes home-based service projects).	Active Bronze: The pack conducts regular activities and outings.	Active Silver: The pack conducts regular activities and outings.	Active Gold: The pack conducts regular activities and outings.	50	100	200
#8	<b>Patrol method:</b> We use the patrol method to develop youth leaders (includes training and mentoring).	Active Bronze: The pack conducts regular activities and outings.	Active Silver: The pack conducts regular activities and outings.	Active Gold: The pack conducts regular activities and outings.	50	100	200
<b>Volunteer Leadership</b>							
#9	<b>Volunteer Opportunities:</b> The pack will provide a variety of volunteer opportunities and training.	Active Bronze: The pack conducts regular activities and outings.	Active Silver: The pack conducts regular activities and outings.	Active Gold: The pack conducts regular activities and outings.	50	100	200
#10	<b>Trained Leadership:</b> We have trained and engaged leaders at all levels.	Active Bronze: The pack conducts regular activities and outings.	Active Silver: The pack conducts regular activities and outings.	Active Gold: The pack conducts regular activities and outings.	50	100	200

**Total points earned:** \_\_\_\_\_  
**No. of objectives with points:** \_\_\_\_\_

☐ **Bronze:** Earn at least 100 points by earning points in at least 7 objectives.  
☐ **Silver:** Earn at least 200 points by earning points in at least 8 objectives.  
☐ **Gold:** Earn at least 300 points by earning points in at least 9 objectives and at least Bronze in 4.  
☐ Our pack has completed online rechartering by the deadline in order to maintain continuity of our program.  
☐ We verify that these requirements have been completed.

Commissioner: \_\_\_\_\_ Date: \_\_\_\_\_  
 Committee Chair: \_\_\_\_\_ Date: \_\_\_\_\_  
 Commissioner: \_\_\_\_\_ Date: \_\_\_\_\_  
 This form should be submitted to your unit commissioner or the Scout service center as directed by your council.

Revised: 03/01/2022

**Troop \_\_\_\_\_ of \_\_\_\_\_ District**  
**2022 Scouting's Journey to Excellence**  
*"The BSA method for annual planning and continuous improvement"*

Item	Objective	Bronze Level	Silver Level	Gold Level	Bronze Points	Silver Points	Gold Points
<b>Planning and Budget</b>							
#1	<b>Planning and budget:</b> We have a program plan and budget that is regularly reviewed by the committee, following BSA policies related to fundraising, (volunteer meetings and other meetings as appropriate.)	Active Bronze: The troop has an annual program plan and budget that is regularly reviewed by the committee, following BSA policies related to fundraising, (volunteer meetings and other meetings as appropriate.)	Active Silver: The troop has an annual program plan and budget that is regularly reviewed by the committee, following BSA policies related to fundraising, (volunteer meetings and other meetings as appropriate.)	Active Gold: The troop has an annual program plan and budget that is regularly reviewed by the committee, following BSA policies related to fundraising, (volunteer meetings and other meetings as appropriate.)	50	100	200
<b>Membership</b>							
#2	<b>Building Venturing:</b> We recruit new youth into the troop in order to grow membership.	Active Bronze: The troop recruits at least one new youth into the troop in order to grow membership.	Active Silver: The troop recruits at least one new youth into the troop in order to grow membership.	Active Gold: The troop recruits at least one new youth into the troop in order to grow membership.	50	100	200
#3	<b>Retention:</b> We retain a significant percentage of youth members.	Active Bronze: The troop retains at least 75% of youth members.	Active Silver: The troop retains at least 80% of youth members.	Active Gold: The troop retains at least 85% of youth members.	50	100	200
#4	<b>Volunteer-to-Scout transition:</b> We have an effective plan to recruit Scouts into the troop.	Active Bronze: The troop has an effective plan to recruit Scouts into the troop.	Active Silver: The troop has an effective plan to recruit Scouts into the troop.	Active Gold: The troop has an effective plan to recruit Scouts into the troop.	25	50	100
<b>Program</b>							
#5	<b>Advancement:</b> We achieve a high percent of Scouts earning rank advancements.	Active Bronze: The troop achieves a high percent of Scouts earning rank advancements.	Active Silver: The troop achieves a high percent of Scouts earning rank advancements.	Active Gold: The troop achieves a high percent of Scouts earning rank advancements.	50	100	200
#6	<b>Short-term camping:</b> We conduct short-term camping activities throughout the year.	Active Bronze: The troop conducts short-term camping activities throughout the year.	Active Silver: The troop conducts short-term camping activities throughout the year.	Active Gold: The troop conducts short-term camping activities throughout the year.	50	100	200
#7	<b>Long-term camping:</b> We participate in long-term camp with a majority of Scouts in attendance (includes council-approved alternatives).	Active Bronze: The troop participates in long-term camp with a majority of Scouts in attendance (includes council-approved alternatives).	Active Silver: The troop participates in long-term camp with a majority of Scouts in attendance (includes council-approved alternatives).	Active Gold: The troop participates in long-term camp with a majority of Scouts in attendance (includes council-approved alternatives).	100	200	300
#8	<b>Service projects:</b> We participate in service projects, and at least one benefiting the disadvantaged (includes home-based projects).	Active Bronze: The troop participates in service projects, and at least one benefiting the disadvantaged (includes home-based projects).	Active Silver: The troop participates in service projects, and at least one benefiting the disadvantaged (includes home-based projects).	Active Gold: The troop participates in service projects, and at least one benefiting the disadvantaged (includes home-based projects).	25	50	100
#9	<b>Patrol method:</b> We use the patrol method to develop youth leaders (includes training and mentoring).	Active Bronze: The troop uses the patrol method to develop youth leaders (includes training and mentoring).	Active Silver: The troop uses the patrol method to develop youth leaders (includes training and mentoring).	Active Gold: The troop uses the patrol method to develop youth leaders (includes training and mentoring).	50	100	200
<b>Volunteer Leadership</b>							
#10	<b>Leadership and family engagement:</b> The troop will provide a variety of volunteer opportunities and training.	Active Bronze: The troop provides a variety of volunteer opportunities and training.	Active Silver: The troop provides a variety of volunteer opportunities and training.	Active Gold: The troop provides a variety of volunteer opportunities and training.	50	100	200
#11	<b>Trained leadership:</b> We have trained and engaged leaders at all levels.	Active Bronze: The troop has trained and engaged leaders at all levels.	Active Silver: The troop has trained and engaged leaders at all levels.	Active Gold: The troop has trained and engaged leaders at all levels.	50	100	200

**Total points earned:** \_\_\_\_\_  
**No. of objectives with points:** \_\_\_\_\_

☐ **Bronze:** Earn at least 100 points by earning points in at least 7 objectives.  
☐ **Silver:** Earn at least 200 points by earning points in at least 8 objectives.  
☐ **Gold:** Earn at least 300 points by earning points in at least 9 objectives and at least Bronze in 4.  
☐ Our troop has completed online rechartering by the deadline in order to maintain continuity of our program.  
☐ We verify that these requirements have been completed.

Scoutmaster: \_\_\_\_\_ Date: \_\_\_\_\_  
 Committee Chair: \_\_\_\_\_ Date: \_\_\_\_\_  
 Commissioner: \_\_\_\_\_ Date: \_\_\_\_\_  
 This form should be submitted to the Scout service center or your unit commissioner, as directed by your council.

**Crew \_\_\_\_\_ of \_\_\_\_\_ District**  
**2022 Scouting's Journey to Excellence**  
*"The BSA method for annual planning and continuous improvement"*

Item	Objective	Bronze Level	Silver Level	Gold Level	Bronze Points	Silver Points	Gold Points
<b>Planning and Budget</b>							
#1	<b>Planning and budget:</b> We have a program plan and budget that is regularly reviewed by the committee, following BSA policies related to fundraising, (volunteer meetings and other meetings as appropriate.)	Active Bronze: The crew has an annual program plan and budget that is regularly reviewed by the committee, following BSA policies related to fundraising, (volunteer meetings and other meetings as appropriate.)	Active Silver: The crew has an annual program plan and budget that is regularly reviewed by the committee, following BSA policies related to fundraising, (volunteer meetings and other meetings as appropriate.)	Active Gold: The crew has an annual program plan and budget that is regularly reviewed by the committee, following BSA policies related to fundraising, (volunteer meetings and other meetings as appropriate.)	50	100	200
<b>Membership</b>							
#2	<b>Building Venturing:</b> We recruit new youth into the crew in order to grow membership.	Active Bronze: The crew recruits at least one new youth into the crew in order to grow membership.	Active Silver: The crew recruits at least one new youth into the crew in order to grow membership.	Active Gold: The crew recruits at least one new youth into the crew in order to grow membership.	50	100	200
#3	<b>Retention:</b> We retain a significant percentage of youth members.	Active Bronze: The crew retains at least 75% of youth members.	Active Silver: The crew retains at least 80% of youth members.	Active Gold: The crew retains at least 85% of youth members.	50	100	200
<b>Program</b>							
#4	<b>Advancement:</b> We conduct regular activities including a Tier II or Tier III adventure.	Active Bronze: The crew conducts regular activities including a Tier II or Tier III adventure.	Active Silver: The crew conducts regular activities including a Tier II or Tier III adventure.	Active Gold: The crew conducts regular activities including a Tier II or Tier III adventure.	50	100	200
#5	<b>Leadership:</b> We develop youth who will provide leadership to crew meetings and activities (includes home-based projects).	Active Bronze: The crew develops youth who will provide leadership to crew meetings and activities (includes home-based projects).	Active Silver: The crew develops youth who will provide leadership to crew meetings and activities (includes home-based projects).	Active Gold: The crew develops youth who will provide leadership to crew meetings and activities (includes home-based projects).	50	100	200
#6	<b>Personal growth:</b> We provide opportunities for advancement and self-actualization.	Active Bronze: The crew provides opportunities for advancement and self-actualization.	Active Silver: The crew provides opportunities for advancement and self-actualization.	Active Gold: The crew provides opportunities for advancement and self-actualization.	50	100	200
#7	<b>Service:</b> We participate in service projects, and at least one benefiting the disadvantaged (includes home-based projects).	Active Bronze: The crew participates in service projects, and at least one benefiting the disadvantaged (includes home-based projects).	Active Silver: The crew participates in service projects, and at least one benefiting the disadvantaged (includes home-based projects).	Active Gold: The crew participates in service projects, and at least one benefiting the disadvantaged (includes home-based projects).	50	100	200
<b>Adult Volunteer Leadership</b>							
#8	<b>Leadership recruitment:</b> We have a proactive approach in recruiting sufficient leaders and communicating with parents (includes home-based projects).	Active Bronze: The crew has a proactive approach in recruiting sufficient leaders and communicating with parents (includes home-based projects).	Active Silver: The crew has a proactive approach in recruiting sufficient leaders and communicating with parents (includes home-based projects).	Active Gold: The crew has a proactive approach in recruiting sufficient leaders and communicating with parents (includes home-based projects).	50	100	200
#9	<b>Trained leadership:</b> We have trained and engaged leaders at all levels.	Active Bronze: The crew has trained and engaged leaders at all levels.	Active Silver: The crew has trained and engaged leaders at all levels.	Active Gold: The crew has trained and engaged leaders at all levels.	100	200	300

**Total points earned:** \_\_\_\_\_  
**No. of objectives with points:** \_\_\_\_\_

☐ **Bronze:** Earn at least 100 points by earning points in at least 7 objectives.  
☐ **Silver:** Earn at least 200 points by earning points in at least 8 objectives.  
☐ **Gold:** Earn at least 300 points by earning points in at least 9 objectives.  
☐ Our crew has completed online rechartering by the deadline in order to maintain continuity of our program.  
☐ We verify that these requirements have been completed.

Advisor: \_\_\_\_\_ Date: \_\_\_\_\_  
 Crew President: \_\_\_\_\_ Date: \_\_\_\_\_  
 Commissioner: \_\_\_\_\_ Date: \_\_\_\_\_  
 This form should be submitted to the Scout service center or your unit commissioner, as directed by your council.

<https://www.scouting.org/awards/journey-to-excellence/unit/>



Prepared. For Life.®

# CUB SCOUT SUMMER PASSPORT

The Cub Scout Summer Passport is a great way to keep Cub Scouts and their families engaged throughout the **summer!**

Physical available TODAY!

Digital available starting May 1st

“Do Your Best!” to  
complete as many  
as you can to  
receive a FREE  
patch!




Prepared. For Life.®

# HELPFUL TIPS

## Lookup Registrations in BlackPug

[Hawk Mountain Council Home](#)[Calendar](#)[Parent Portal](#)[Lookup Registration](#)



# BOY SCOUTS OF AMERICA®

## HAWK MOUNTAIN COUNCIL

GridMonthList


DistrictsCategoriesCampsCounties

Apply FilterClear Filter

30 Per Page

Print


Subscribe



Council

Details/Register


**Wood Badge 2022**  
**Starts:** 04-22-2022  
**Ends:** 04-24-2022  
Wood Badge is the Boy Scouts of America's ultimate leadership training designed to meet the advanced leadership needs of Scouters in all aspects of the BSA, whether unit, district, or council leve...  
**Contact:** Terry Troutman, Michele Bement  
**Listed in:** Training, Scouts BSA, Venturing, Camp, Cub Scout  
**County:** not found



Registration is open  
Council

Details/Register


**OA Weekends**  
**MULTIPLE SESSIONS TO CHOOSE FROM**  
Starting: 04-22-2022  
Join the Arrowmen of Kittatinny Lodge for a weekend of fellowship, service, and great food. Event attendance is open to all active, dues-paid lodge members and Ordeal candidates. If you have...  
**Contact:** Eric Silva, Glenn Piper  
**Listed in:** OA, Camp, Scouts BSA, Venturing  
**County:** Schuylkill, PA



Registration is open  
Black Rock

Details/Register

**Black Rock District First Aid Meet**  
**Starts:** 04-23-2022  
**Ends:** 04-23-2022  
The purpose of the First Aid Meet is to use healthy competition to show the base skill level of the units in our District and Council. The scoring is used to show unit leaders where their Scouts...  
**Listed in:** Scouts BSA  
**County:** Schuylkill, PA



Support



Prepared. For Life.®

# HELPFUL TIPS

Be A Scout Pin Updates

<http://www.scouting.org/wp-content/uploads/2020/05/Be-A-Scout-Pin-Set-up.pdf>

My.Scouting Accessibility

Merit Badge Counselor Lookup

Completed charter renewals, check to make sure they include active Scouts and Leaders!



Prepared. For Life.®

# UPCOMING EVENTS

Herbie Helper Days – Saturdays

- April 22<sup>nd</sup>
- May 6<sup>th</sup>

Merit Badge Day @ HMSR

- Saturday, April 29<sup>th</sup>

Gathering of Eagles and Council Recognition Event

- Sunday, May 21<sup>st</sup>

Scout Night at the Fightin Phils

- Friday, May 26<sup>th</sup>

Check Council  
calendar for most  
up to date event  
information!



Prepared. For Life.®

# UPCOMING EVENTS

Herbie Helper Days – Saturdays

- April 22<sup>nd</sup>
- May 6<sup>th</sup>

Merit Badge Day @ HMSR

- Saturday, April 29<sup>th</sup>

Gathering of Eagles and Council Recognition Event

- Sunday, May 21<sup>st</sup>

Scout Night at the Fightin Phils

- Friday, May 26<sup>th</sup>



Prepared. For Life.®